

# ANNUAL REPORT 2022

---



**MYANMAR**

# TABLE OF CONTENT

---

PAGE 2	EDITO / FXB MYANMAR
PAGE 3	KEY FIGURES
PAGE 4	<b>ECONOMIC AND COMMUNITY DEVELOPMENT -</b> FXBVILLAGE
PAGE 7	<b>EDUCATION</b> - VOCATIONAL TRAINING
PAGE 8	<b>PROTECTION</b> - WOMEN AND GIRLS FIRST
PAGE 9	<b>PROTECTION</b> - HUMAN DRAMA
PAGE 10	<b>HEALTH</b> - FLOATING CLINICS
PAGE 11	<b>HEALTH</b> - HIV PREVENTION FOR KEY POPULATION
PAGE 12	PARTNERS
PAGE 13	FXB MYANMAR ACCOUNTS

2021 and 2022 have been traumatic years for the people of Myanmar, characterized by unprecedented levels of human suffering. Many of the impressive development gains the country has made over the past 15 years are now sadly under serious threat due to a combination of economic instability, COVID-19 crisis, escalating conflict, and a rapid erosion of human rights.

Despite the difficulties, the FXB Myanmar team remains fully committed and shows incredible adaptability to continue our mission to bring about lasting change in the country in order to eradicate extreme poverty and promote social justice.

We are proud of these women and men who are the beating heart of FXB in Myanmar and who have made a difference in the lives of several thousand people in 2022.

**Christine Eggs**

GENERAL DIRECTOR  
FXB INTERNATIONAL

**Dr Cho Cho Mar Kyaw**

COUNTRY DIRECTOR  
FXB MYANMAR



FXB, registered as an International Non-Governmental Organization (INGO), began operations in Myanmar in 1993 with the objective to provide economic and social reintegration to 95 Burmese girls rescued from forced prostitution during a police raid in Thailand. As the program grew rapidly, FXB created its own vocational training center to extend its intervention to vulnerable young people and people infected with HIV/AIDS. The organization also organized HIV/AIDS and human-trafficking campaigns and undertook emergency and reconstruction operations following floods and cyclone Nargis.

In 30 years, FXB has developed numerous projects in the areas of **Economic and Community Development – Vocational Training – Protection and Health** that have impacted the lives of nearly 2,000,000 people.

Along with women and girls, internally displaced persons (IDPs) are considered the main target group of FXB Myanmar. It is essential to provide them with full access to information on critical health and social issues, vocational training, economic opportunities, and leadership capacity building.

# KEY FIGURES 2022

*"In 30 years, we have positively impacted the lives of 2 million adults and children in Myanmar through all of our projects. It hasn't always been easy and it takes perseverance, a long-term vision and committed teams to succeed.*

*We are pleased to see generations of women and children who have taken advantage of the support offered to them to gradually and successfully build self-esteem and a more dignified life".*

Dr Cho Cho Mar Kyaw

**72,640**

people directly impacted by our projects

**126,552**

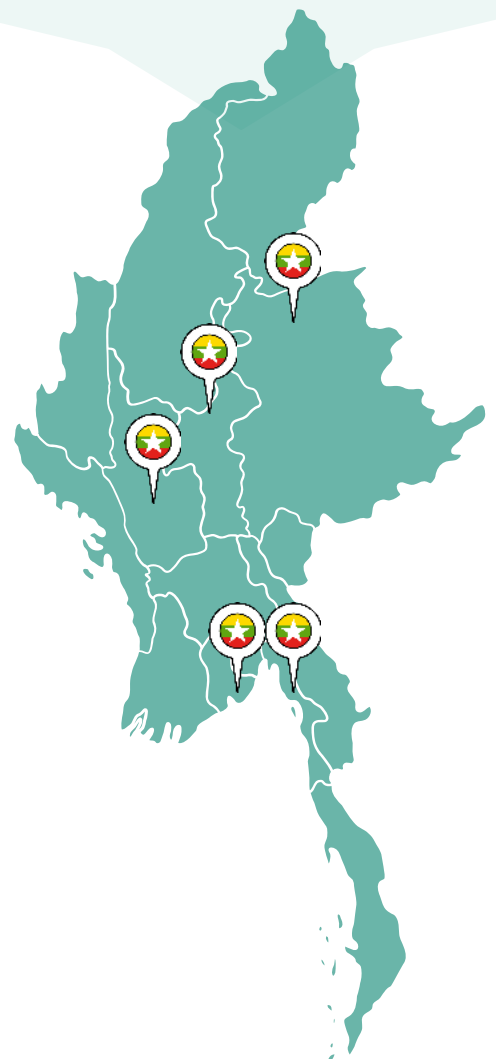
family and community members indirectly impacted by our projects

**96**

staff members

**6**

projects





# ECONOMIC AND COMMUNITY DEVELOPMENT - FXBVILLAGE

In 2022, FXB was conducting FXBVillage projects in 6 villages, part of three townships (Mudon, Kyaukmayaw and Paung), in Mon State. Similar interventions have been conducted over the past 5 years in 4 villages, part of four townships (Hpanon, Kadonepaw, Kingchaung and Hlaing), in Mon State as well as in the informal settlement of Lay Kay Kaw, in Kayin State. An external evaluation will be conducted in late 2023 in Mon State to assess the sustainability of impacts in these communities.



POVERTY, HUNGER, CONFLICT, DISEASE, STIGMATIZATION AND ILLITERACY FORM A VICIOUS CIRCLE THAT IS DIFFICULT TO BREAK. HOLISTIC APPROACH IS AT THE HEART OF FXB'S DNA.

950

people benefited from this project in 2022

9,510

community members were reached by the various outreach activities

## OUR ASSESSMENT

Poverty is multidimensional. It is more than the inability to ensure a sustainable livelihood due to a lack of income and resources. Our participants (beneficiaries) face a variety of complex challenges, including conflict, malnutrition, lack of clean drinking water, limited access to education and information, disease, poor housing, environmental conditions, social discrimination and exclusion, and adverse climatic conditions.

## CONTEXT

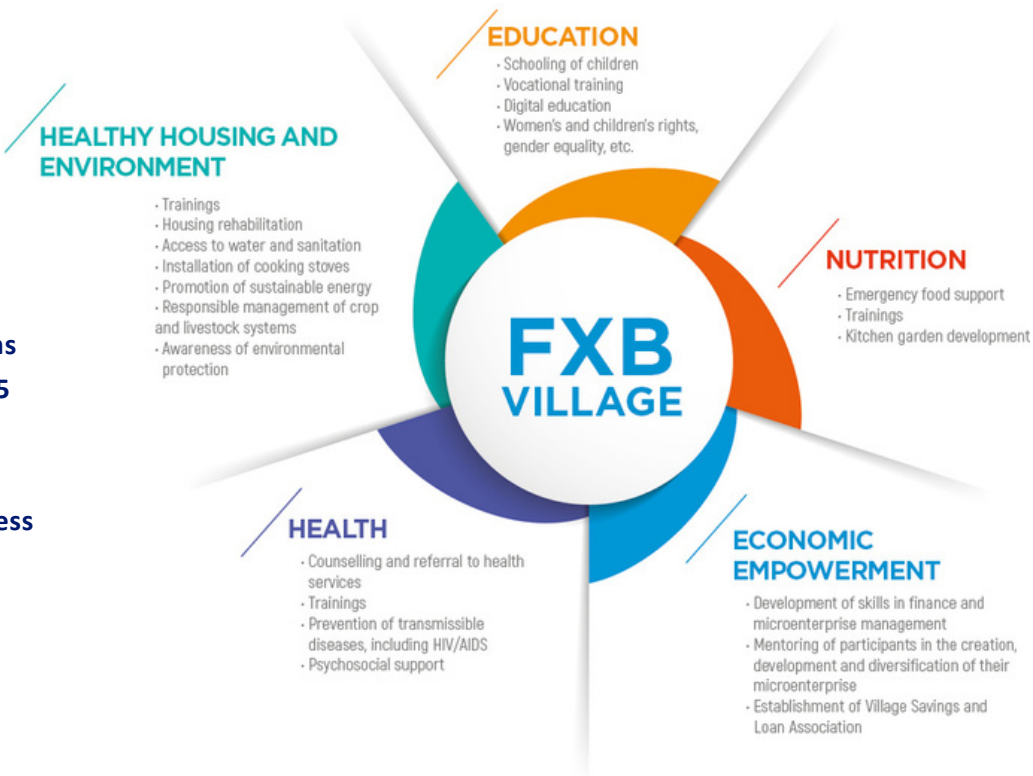
Of the 200 families, composed of IDPs, migrants, and ultra-poor, who participate in this project, 90% belonged to quintiles 1 and 2 (Myanmar national wealth quintile) at the launch of the project in 2021, the poorest and most vulnerable populations. 90% of the primary caregivers are women.

In 2022, political instability worsened as armed clashes between the Tatmadaw and ethnic armed organizations (EAOs) or the People's Defense Forces (PDFs) intensified in several regions of Mon State. The poverty rate has doubled since the start of the project and the health system is on the verge of collapse. Note also that the children had not gone to school for almost two years.

Insecurity, deterioration of the participants' emotional state, price inflation, especially for food, fuel, materials, and access to cash are daily challenges to the implementation of this project. **In spite of this, the team in charge of the project has achieved most of the objectives of this second year of the project implementation by adapting to the circumstances, with patience and determination.**

# WHAT IS THE FXBVILLAGE MODEL?

In place since 1991, the FXBVillage model is a holistic approach to poverty reduction. It aims to concurrently address 5 underlying factors: economic poverty, malnutrition, lack of access to health care, lack of access to education and information, and unsanitary housing and environment.



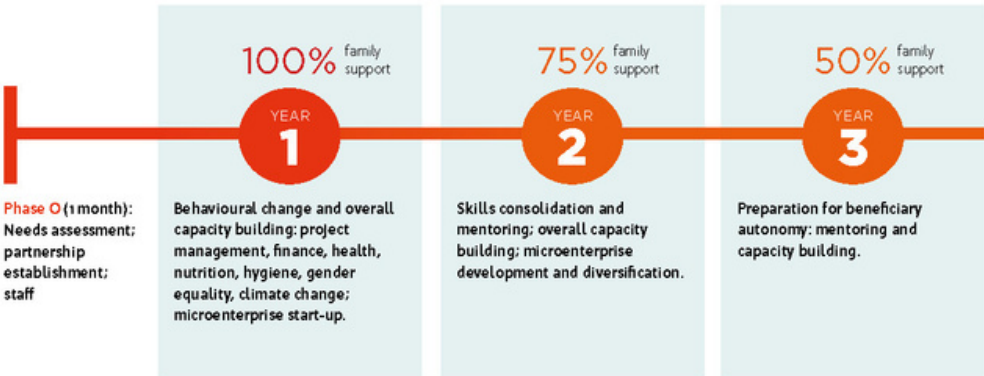
## THE STRENGTH OF OUR APPROACH: addressing the multiple causes of extreme poverty.

The fundamental pillar of our model is economic strengthening. Its main innovation is the donation of seed capital, in lieu of a loan, which combined with technical trainings and training in business management and financial literacy will enable vulnerable families to start Income-Generating activities (IGAs/microenterprises) and gradually earn enough money to meet their daily needs, facilitate their financial inclusion, and continue to prosper after the program ends.

Along with economic strengthening, FXB ensures that each member of the supported families can access their basic human rights through four additional pillars: food security, access to education and crucial health and social information, access to adequate health services and psychosocial support, and a healthy home and environment (climate resilience). For FXB, combating poverty also means fighting against all forms of discrimination, particularly gender discrimination, in order to balance relations between men and women so that the latter, who are more exposed to poverty, can access the same economic and social opportunities. FXB's financial support is reduced as families become more economically independent.

Since the early 2000s, the FXBVillage Poverty Reduction Model has been regularly evaluated. A real impact on the economic, health, and social status of children and adults has been demonstrated.

## 90% OF BENEFICIARIES ACHIEVE ECONOMIC AND SOCIAL AUTONOMY WITHIN 3 YEARS

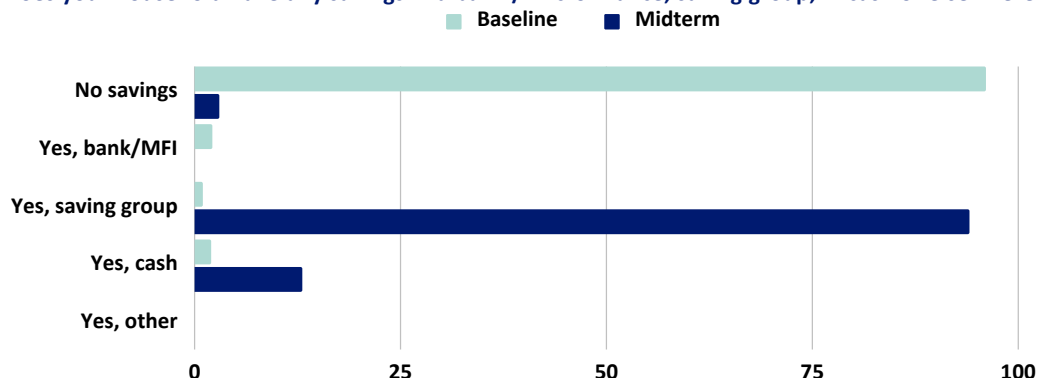


## FXBVILLAGE PROJECT MID-TERM EVALUATION :

### HIGHLIGHT ON THREE PROMISING RESULTS AFTER 18 MONTHS

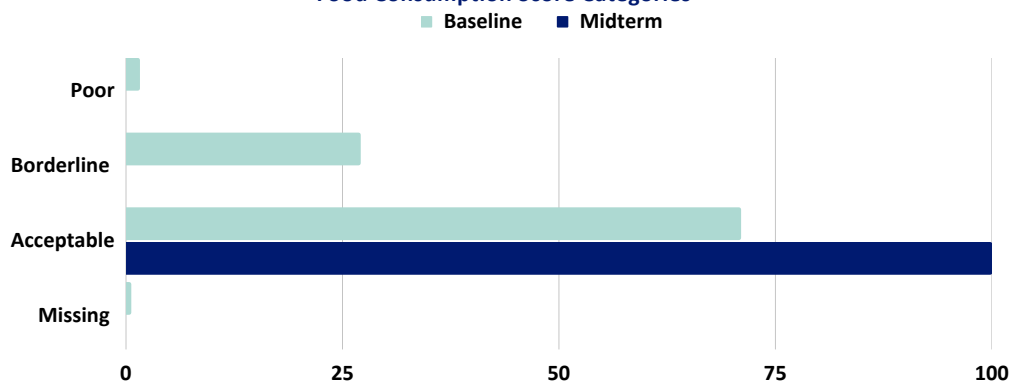
- One of the main objectives of this project is to strengthen the economic capacities of the participant families. **The average of families with savings was 4% at baseline and is 97% at midterm. Furthermore, 100% of the participating families were able to start an economic activity of which 90% are functional.**

Does your household have any savings in a bank / microfinance, saving group, in cash or elsewhere?



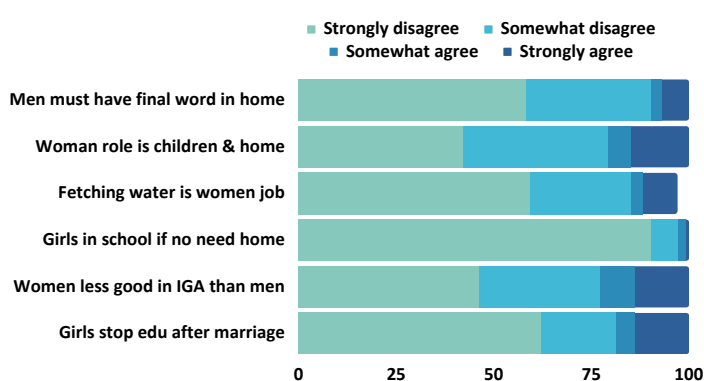
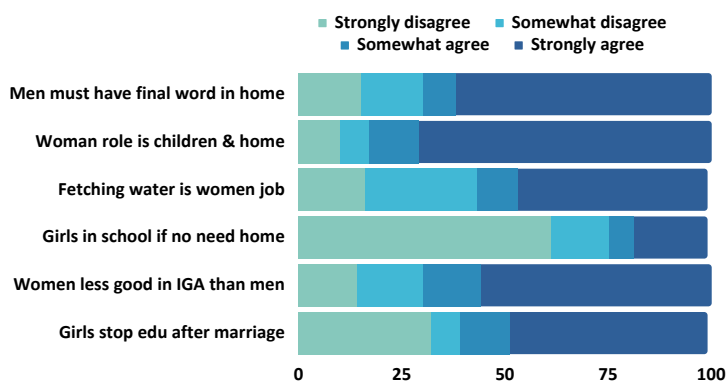
- The Food Consumption Score (FCS) is a complex indicator of a household's food security status, as it considers not only dietary diversity and food frequency but also the relative nutritional importance. **The average FCS among the beneficiary households was 41.25 at baseline and is 70.82 at midterm.**

Food Consumption Score Categories



- Fighting poverty also means fighting all kinds of discrimination, including gender discrimination, and building balancing relations between men and women so that women, who are more exposed to poverty, can have access to the same economic and social opportunities. **The results obtained at the halfway point of the project indicate that the individual or group sessions related to social capacity building, gender equality, gender-based violence, and psychosocial support have generated a significant change in behavior that pave the way for the achievement of all the project's objectives in the next 18 months.**

Agreement of respondent to gender equality statements



# EDUCATION - VOCATIONAL TRAINING

FXB Myanmar has extensive experience in vocational training. In Shwe Pyi Thar, in the suburbs of Yangon, our Vocational Training Center has been welcoming, since 1993, about 200 apprentices per year who are trained for 3 to 24 months in sewing, interior decoration, weaving, wood and metalwork, and hospitality. We also provide informal education to vulnerable children who have dropped out of the school system, especially in math, reading, and writing. Whether it is our apprentices or the school children, they all benefit from psychosocial and interpersonal skills empowerment.



268

young people and IDPs benefited from our vocational training projects in 2022

20

children attended our non-formal education project

1,072

family and community members were indirectly impacted

In order to reach IDPs or young people with little or no access to such services, FXB has developed **Mobile Vocational Training Units (MVTU)** in garment making, hospitality, wood and bamboo working.

Over the past five years, FXB has conducted MVTU in Magway Region, Mon, Shan, Rakhine and Kayin States as well as specific interventions in IDPs camp in Bago Region, Kayin and Rakhine States.

## CONTEXT

Youth unemployment is very high in the country. Most young people are too poor to access vocational training, which perpetuates the vicious cycle of poverty. With few or no competencies, they find themselves out of the education system and therefore occupying non-formal jobs. They are also especially exposed to various forms of danger such as child labor, crime, human trafficking, sexual abuse, drugs, and HIV/AIDS. The dramatic increase in unemployment due to political instability, especially among youth, has placed more attention than ever on vocational education and training to support their livelihoods.

**THE STRENGTH OF OUR APPROACH:** developing the professional, psychosocial, and interpersonal skills of young people while supporting their job searches and access to entrepreneurship.

In addition to practical and theoretical training, all apprentices follow various courses designed to strengthen their life skills and self-esteem. Our beneficiaries are also accompanied in all the steps of the job search process, until the conclusion of a dignified and decent work contract, or in the steps towards self-entrepreneurship.



# PROTECTION/HEALTH - WOMEN AND GIRLS FIRST

FXB is a partner in UNFPA's "Women and Girls First" program which focuses on gender equality and women's empowerment, including access to Sexual and Reproductive Health and Rights services, and the elimination of violence against women and girls (GBV).

12,041

women and girls benefited from this project in 2022

4,134

men and boys benefited from this project in 2022

64,700

family and community members were indirectly impacted

## CONTEXT

In Myanmar, gender inequality and women's exposure to violence, harassment, and abuse are critical risks. It is essential that women and girls have full access to education, training, and economic opportunities and that their leadership capacities are strengthened to enable them to participate in general decision-making.

## OUR ACTION

In 2022, FXB strengthened the capacities of 5 Civil Society Organizations in Southern Shan State on prevention methods related to the program and on a more institutional level, be it financial or procedural.

FXB also operated 3 Safe Houses for GBV survivors in Northern and Southern Shan State as well as 1 One Stop Women Service Center in Yangon Region. They offer a range of services designed to empower the women and their children, such as security, counseling, medical assistance, legal help, referral services, or technical and life skills trainings.

In Shan and Mon States, as well as in Yangon Region and along the Irrawaddy River, FXB conducts advocacy workshops with local leaders and sensitizes youth, their parents and community members on SRHR, GBV and Comprehensive Sexuality Education (CSE).



Gender-based violence (GBV) is a critical and persistent problem in Myanmar, where entrenched and normalized gender discrimination perpetuates a culture of impunity and a climate of permissiveness around violating women's human rights. GBV has further increased since the health and political crisis.

Thus, FXB has considerably strengthened its intervention in the areas of GBV, SRHR, and CSE by adding prevention activities in each of its projects.

# PROTECTION- HUMAN DRAMA

## PREVENTION AND TRAINING THROUGH IMAGE THEATRE.

Human Drama (Image Theatre) objective—the first program of its kind, designed in 2011 by the British Council and FXB —is to help people become aware of various issues related to health, human trafficking or , Gender-Based Violence (GBV) among others. FXB works in collaboration with MyJustice to improve legal knowledge and access to justice in communities. Tens of thousands of people have been impacted by these activities across the country since its launch.

2,542

people were impacted by this project in 2022

10, 170

family and community members were indirectly impacted



### CONTEXT

Whether for cultural, religious, or social reasons, the people of Myanmar suffer from a significant lack of knowledge on crucial health and social issues. Without this knowledge, communities are victims of their ignorance.

### OUR ACTION

After a 2 years of interruption due to COVID and insecurity, this project resumed in August 2022. In partnership with MyJustice, FXB has undertaken prevention and education activities related to GBV, including legal awareness, responses to such violence, and referral services for GBV survivors. These activities were implemented in 40 wards/villages from 4 townships in Mon State.

**THE STRENGTH OF OUR APPROACH : creating fertile ground to inform and induce behavior change.**

In a favorable and secure environment, community members are able to freely express opinions and determine the best solutions to the problems they face.

Unlike other methods of disseminating messages, such as brochures, this edutainment program has proven to be a remarkably efficient tool for communication and raising awareness.

# HEALTH - FLOATING CLINICS

In order to provide adequate health care to communities living along the Irrawaddy River, two cruise ships have been converted into floating clinics, each duly equipped with a consultation room, a pharmacy, and space for minor surgery and dental care.



## CONTEXT

Communities living along the Irrawaddy River face major obstacles in accessing health care. They are often deprived of electricity and modern means of communication. The need for health care is even greater the further away from the urban centers and the villages are no longer accessible by road. Furthermore, the medical infrastructure and the local resources available are rudimentary or non-existent.

## THE STRENGTH OF OUR APPROACH: waterway access to the most isolated areas

The main objectives of these two floating clinics are to allow the population to access primary health care, maternal and child care, infant nutrition services, minor surgeries, and dental care. It is also about improving health outcomes, knowledge as well as referral services in a general context that has deteriorated considerably since the coup and the COVID-19 crisis. In addition, regular revisits to the same villages allow to provide of long-term care for people with chronic diseases. The team also conducts health education and awareness campaigns, notably in Gender Based Violence and Sexual and Reproductive Health and Rights (family planning, HIV and sexually transmitted diseases, etc).

44,555

people benefited from the services of the floating clinics in 2022

59,872

family and community members were indirectly impacted

128

villages were reached, most of them two or three times



# HEALTH - HIV PREVENTION FOR KEY POPULATION

The HIV-related interventions, implemented in Mon State and in the Yangon Region, are highly needed and extremely important for key population, as the situation in the country continues to be unstable, preventing key population to have access to basic services. *Since 1993, FXB has undertaken numerous HIV-related activities through awareness campaigns or Sunday empowerment groups and has been an implementing partner of the 3D Fund (Global Fund) strategy in Myanmar, in Yangon Region, Mon and Shan States, Irrawaddy Region and Dry Zone.*



## CONTEXT

Myanmar's HIV epidemic is concentrated among certain key populations, most notably people who inject drugs, but also men who have sex with men, transgender people, and sex workers. More than 70% of new infections in the country occur among these groups. HIV-related indicators for key populations in Myanmar are all very high in international comparison.

## OUR ACTION

In order to reduce new HIV infections, a combination of interventions is offered to female sex workers and other key populations by improving HIV testing services access, linkage to antiretroviral therapy with efficient service delivery, and continuum care. It is also about providing psychosocial support to PLHIV to help them build resilience for a positive living despite all the constraints of the disease. Health outcome for people living with HIV is improved by maximizing referral linkage to National AIDS Programme.

8,130

key people benefited from this project in 2022

57,230

male and female condoms were distributed during HIV prevention sessions



# PARTNERS

---



On behalf of the thousands of children and families who have benefited from FXB's help in Myanmar in 2022, we would like to warmly thank our partners for their precious and indispensable support.

ALLIANCE MYANMAR

FONDS POUR EUX

GEBAUER STIFTUNG

IF INTERNATIONAL FOUNDATION

J&K WONDERLAND FOUNDATION

MAC AIDS FUND

MAURICE MACHOUD FOUNDATION

FONDS DE SOUTIEN MIGROS

NOVOTEL MAX YANGON

POMENA ENFANCE

PRO AREMORICA TRUST

THE ROSE CHARITABLE TRUST

SERVICE DE LA SOLIDARITÉ INTERNATIONALE DU CANTON DE GENÈVE

FONDATION D'ENTREPRISE TOTAL

UNFPA

# ACCOUNTS

## 2022 financial statement (\$)

### INCOMES

Donations and Contributions	1 095 683
Balance of funds available from 2021	245 011
<b>Other Income</b>	<b>35 175</b>
<b>TOTAL INCOME</b>	<b>1 375 868</b>

### EXPENSES

Program expenses	1 229 830
Other expenses	29 916
<b>TOTAL EXPENSES</b>	<b>1 259 746</b>

<b>BALANCE OF FUNDS AT THE END 2022</b>	<b>116 123</b>
---	----------------

PROGRAMS	BALANCE 2021	DONATIONS	PROGRAM EXPENSES
Economic et Community Developement	81 820	141 672	176 182
Education and Vocational Training	41 720	150 145	171 018
Women and Girls First	40 329	378 984	571 403
Human Drama	0	67 818	44 209
Health - Floating Clinics	76 838	325 852	227 365
Health - HIV Prevention for Key People	8 736	31 212	39 652
FXB Showroom	- 4 432	35 175	29 916
<b>TOTAL</b>	<b>245 011</b>	<b>1 130 858</b>	<b>1 259 746</b>

**IN 2022, FXB INTERVENTION IN MYANMAR AMOUNTS TO \$17,35 PER DIRECT BENEFICIARY**

#### **FXB MYANMAR OFFICE**

No. 46, U kyaw Dway st,  
Nant Thar Kone lane  
Insein, Yangon 11012  
+95 9 517 0265

#### **FXB INTERNATIONAL HQ**

Rue de Lausanne 44  
1201 Geneva (Switzerland)  
+41 22 741 0030

info@fxb.org

<https://fxb.org>

Twitter@FXBIntl

Facebook FXB International

Instagram fxb\_international

Linkedin fxb-international

---

Our **FXB Showroom** – social enterprise store – **is located at the same address than FXB Myanmar office**. It offers to a local clientele as well as to expatriates, hotels, companies or tourists passing through a varied collection of furniture, lamps, fabrics, carpets, curtains, ecological pens, clothes, and toys. These high-quality items are made by a group of 20 people who have completed their training in textiles, weaving, wood or metal in our vocational training centre in Shwe Pyi Thar. The profits made are of course used to pay the artisans and to purchase raw materials, but also to provide a small stipend to the apprentices at the various sites where FXB undertakes its vocational training projects.

<https://www.facebook.com/FXB-Showroom-Handicrafts-1822216758026377/>